

LinkLine

Kvaerner - Balfour Beatty JV and Babbie Group

ISSUE 4 JULY 1997



INTRODUCTION

Link Line is the newsletter for the M1-A1 Link Road (Lofthouse to Bramham) issued to provide the public with information about the project. Link Line is issued quarterly and includes details of progress, the forthcoming programme and future traffic management layouts.

PROGRESS TO DATE

Since March major earthworks have resumed once again following a quiet winter. Construction of embankments for the Pontefract Lane junction has commenced using material from cuttings nearby. The embankment between Barnbow Common and the Leeds-York railway has progressed well with the underpass now forming a void through the fill. At Bell Hill and Hook Moor the crushing plants continue to process excavated rock for re-use elsewhere on the

Key milestones have been achieved with the railway crossing at Crawshaw Wood being opened to earthmoving traffic and completion of the haul route under the new A63 bridges

at Austhorpe Junction. Having overcome these obstacles, major earthmoving from Swillington Common to Barnbow Common and Parlington will be able to progress rapidly through the summer.

Excavation for the tunnels under the M1 and M62 near the M1/M62 interchange has commenced and a vast hole has been excavated on the line of the free flow link under the M62 eastbound carriageway

(see adjacent photograph)

Good progress has also been made on the 59 major structures (bridges, tunnels, culverts) being constructed along the route. The Aire Valley Viaduct is the largest structure on the project with a construction cost of around £8 million. The viaduct will have five spans, a total length of 250 metres and will carry the Link Road over the Aire and Calder navigation. The road deck will rest on 3.5 m deep steel beams which have a total weight of 4,000 tonnes. Columns to support the steel beams and the north abutment have been completed.

The skew bridge that will carry the northbound link road over the M1 near Belle Isle also includes a



road deck supported on deep steel beams. The beams are currently being erected and can be clearly seen from the M1 carriageway.

At Hook Moor, the temporary bridge which was erected across the A1 in December 1996 has been removed using a 400 tonne mobile crane. During the six months that it was erected the bridge provided an important link on the haul route between Aberford and Parlington, allowing the Joint Venture to keep heavy traffic off local highways. Several of the smaller bridges are nearing completion including those at Bramham Crossroads, Parlington Junction, Barwick Road, Bullerthorpe Lane, Stourton railway crossing and Rothwell Haigh junction. Austhorpe Junction bridges on the A63 were the first to be opened to traffic in late June.

In Swillington, Bullerthorpe Lane was closed to traffic on 9 June 1997 for a period of approximately 6 weeks. Pedestrian access is still available through the site. During the closure British Telecom cables are being diverted and the road is being realigned over the new bridge which crosses the M1-A1 Link Road. Longthorpe Lane remains closed for realignment and bridge construction.

The B6481 has been diverted back onto its original alignment on a recently completed embankment. Work is now progressing on completing the embankment across the line of the old diversion route.



Above: Austhorpe Junction (taken 1.5.97)

PROGRAMME FOR THE NEXT THREE MONTHS

There are several bridges nearing completion that will be opened to traffic during the next three months. At the north end of the project the new A1/A64 junction at Bramham Crossroads will be partially complete and realignments of the A64 will allow traffic to use both of the new bridges. Off-peak lane closures will be required on the A64 to carry out the tie-in works.

The extension of Aberford Main Street to Bramham Crossroads will be completed and opened in early Autumn. Surfacing of the new A1 southbound carriageway will be completed between Black Horse Farm and Micklefield allowing the A1 to be moved across in contraflow. This will release the existing carriageway for reconstruction. Some night work will be necessary on the A1 to complete the traffic management arrangements for the crossover. When traffic is switched onto the new southbound carriageway two lanes of traffic will be maintained in each direction. At Hook Moor, the southbound on-slip and northbound off-slip will be closed. The new alignment of Collier Lane (which runs towards Lotherton Hall) will also be opened.

Near Micklefield, construction of the new Ridge Road link will commence while construction of the A656 link to Parlington Junction will be completed and opened. At Parlington Junction both of the new bridges on the A642 will be opened to traffic and the old A642 will be removed where it crosses the junction.

Between Garforth and Barwick-in-Elmet, Barwick Road will be closed from 01.00 hrs on Monday 14 July for approximately 6 weeks where it crosses the

and beams spanning the river and canal will be lifted into place. Stourton railway crossing will be sufficiently complete to allow site traffic across the railway.

Preparation of the formation level and laying of sub-base material will be carried out through the summer allowing the first concrete carriageway to be



Above: Widening of A1 alongside Aberford from dual 2 to dual 4 lanes

construction site for the diversion of a high pressure gas main. This temporary closure is required to secure the necessary safety exclusion zone around the gas main and will facilitate tie-in and realignment works. The diversion route will be signposted via the A642, A63, A6120 and the Barwick to Cross Gates Road. Traffic will be routed over the new Barwick Road bridge when the road is reopened.

South of the Leeds-York railway line, bridges at Barrowby Lane and Barrowby Carr are progressing well. Temple Newsam underpass is substantially complete. In the Aire Valley, columns and abutments to the viaduct will be completed

At Rothwell Haigh, the A639 north of the Link Road will be diverted onto its new alignment to a new roundabout with the B6481 north-west of the motorway onto the B6481 to and from the Oulton direction allowing the existing A639 south-east of the motorway to be reconstructed with a new roundabout south-east of the bridge.

Construction of the Link Road carriageway between the M1 and A1 will predominantly be of concrete with short sections of stone mastic asphalt in residential areas for noise reduction. A slipform paver will be used to cast the carriageway in continuous daily movements.

laid in September. The slipform paver will commence in the Temple Newsam area and progress eastwards.

At Belle Isle, the ...1 southbound realignment under the new overbridge will be well progressed. Further south, the old Sharp Lane bridge will be demolished during the summer once traffic has been diverted onto the new bridge deck which is currently in its temporary position. On the M62 new bridges are also being constructed at Lingwell Gate Lane and Dolphin Lane.

The overall project is approaching the half-way stage and progress through this summer is critical for our programme.

TRAFFIC MANAGEMENT ON THE M1 AND M62

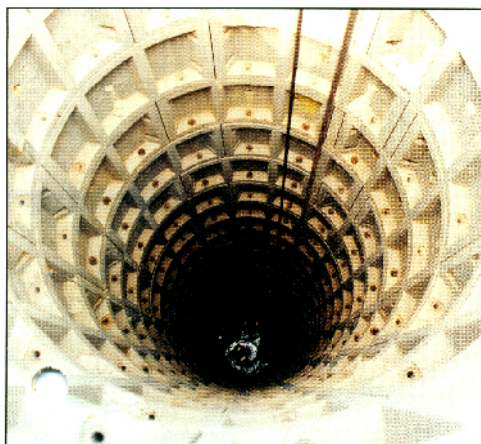
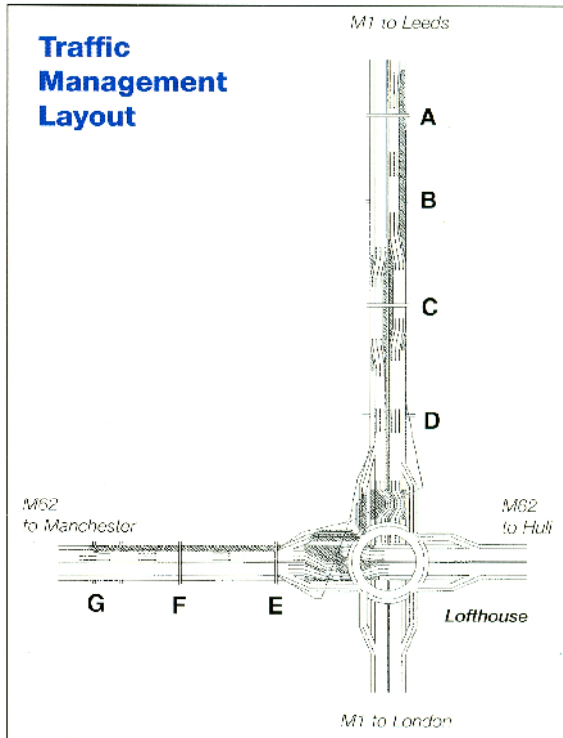
The traffic management arrangement on the motorways will be as shown on the adjacent layout for most of the next three months. However the lane three closures at Sharp Lane will be removed and replaced by hardshoulder closures during the quarter. Some day time (off peak) and night time lane closures will be necessary for structures and roadwork operations. A full M1 closure will be required overnight between junctions 42 and 43 during the summer for the demolition of Sharp Lane bridge. Advance warning will be given and diversion routes via the A642 and A639 will be signposted the night. Overnight slip road closures will also be necessary during July for the installation of new bridge columns at Lofthouse M1/M62 Interchange.

The closures will be required on the M1 northbound on-slip and the M62 eastbound off-slip.

We would take this opportunity to remind motorists that mandatory speed limits are in place through the works to ensure public safety and the safety of the workforce who are operating in close proximity to live traffic.

July 1997

Traffic Management Layout



Left: Lofthouse bridge piers are being constructed top down.

Legend to Traffic Management Layouts

- | | |
|--------------------------|----------------------|
| A Belle Isle Interchange | E Lingwell Gate Lane |
| B Clappgate Lane Subway | F Dolphin Lane |
| C Sharp Lane | G Oakley Subway |
| D Thorpe Lower Lane | |

FOOTPATHS AND BRIDLEWAYS

Generally, footpaths and bridleways remain open where possible although some local diversions have been unavoidable for safety reasons. All arrangements have been agreed with the Public Rights of Way Officer of Leeds City Council.

Oakley subway under the M62 (Footpath 20, Rothwell) will be closed temporarily during the summer for approximately six weeks. Footpaths in Aberford crossing the A1 are in the process of being closed. As part of the project we have started to construct a new footbridge which will cross the A1 near Field Lane. We are in the process of preparing an up to date plan showing the status of all footpaths crossing the M1-A1 Link Road.

If you would like to receive a copy please telephone Andrew Sleightholme on 0113 204 4000.



Above: Parington Junction



Above: Pontefract Lane Junction

SAFETY WARNINGS

With the school summer holidays approaching we would ask parents and teachers to emphasise to children that under no circumstances should they cross (or play on) the M1-A1 Link Road site other than at designated footpath or bridleway crossings. Please also emphasise that it is an offence to move roads signs which are placed for the safety of road users or to give information to the general public.

Vandalism of site equipment and installations has also become a problem particularly alongside the M1. The construction site is a dangerous place especially for those who are not familiar with the dangers

associated with construction sites which include deep excavations, heavy earthmoving plant and stockpiled materials. Unauthorised access could be life threatening particularly for children and teenagers. Unfortunately the increase in vandalism and the dangers associated with unauthorised access may result in legal action being taken against offenders.

PUBLIC LIAISON

The project team recognises that not everyone welcomes the construction activities on the M1-A1 Link Road.

Every reasonable effort will be made to minimise disruption to the local community. The Kvaerner-Balfour Beatty Joint Venture has registered the project for the Considerate Constructors Scheme which is being administered by the Chartered Institute of Building on behalf of the Construction Industry Board. The Joint Venture adheres to the voluntary Code of Considerate Practice which will shortly be displayed on boards outside the three main site offices at Robin Hood, Colton and Roman Road (nr Micklefield).

If you have any comments or queries relating to the project please contact Andrew Waller on 0113 204 4014. Alternatively telephone our roving liaison officer, Gordon Hounslow, on his mobile number 0831 196325. This is a 24 hour line available for emergency use.

A public exhibition will be held in Micklefield during September to display the design of the northern end of the project including traffic management arrangements effecting the A1 and local roads. The time and venue for the exhibition will be displayed nearer the time.



TRAFFIC MANAGEMENT INFORMATION

The Joint Venture has established a traffic management information telephone line on 0113 204 4226.

The line gives up to date details of traffic management on the A1, M1 and M62 in a recorded message. Details of traffic management on local roads can be obtained by telephoning Peter Thickbroom on 0113 204 4072 or the Public Liaison team on 0113 204 4014 or 4068.

Kvaerner - Balfour Beatty JV and Babbie Group

M1/A1 Site Offices, Bullerthorpe Lane, Leeds LS15 9JJ Tel: 0113 204 4014 Fax: 0113 204 4001

LinkLine

Kvaerner - Balfour Beatty JV and Babbie Group



ISSUE 5 OCT 1997

INTRODUCTION

Link Line is the newsletter for the M1-A1 Link Road (Lofthouse to Bramham) issued to provide the public with information about the project. Link Line is issued quarterly and includes details of progress, the forthcoming programme and future traffic management layouts.

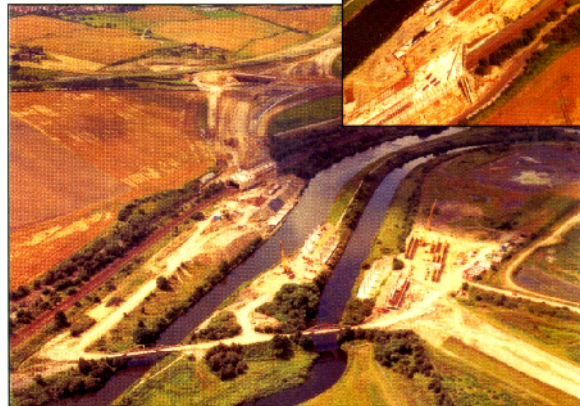
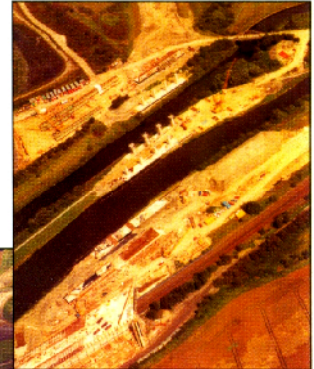
PROGRESS TO DATE

The three year design and construct project which was awarded in March 1996 has just passed the half way stage. Despite the vagaries of the summer weather progress has been maintained through the last quarter and the project is on a programme for its Spring 1999 completion. The route is fast approaching its finished shape with about 80% of the earthworks complete and 140,000 tonnes of blacktop laid. Underpasses and underbridges are disappearing below completed embankments and the crossing of the Leeds - Derby railway line at Stourton has allowed the earthworks from Bell Hill area to Pontefract Lane junction to progress. Excavation for phase one of the M1 tunnel has been

completed and construction of the tunnel structure has almost been completed. Phase one of the M62 tunnel will soon be buried below the new surface of the eastbound motorway. At Sharp Lane, the old M1 overbridge was successfully demolished overnight at the end of August and traffic is currently flowing over the temporary bridge while foundations for the new bridge are being constructed. Further north, the steel beams of the new St. George's Bridge at Belle Isle are substantially complete and work on the bridge deck is underway. The existing M1 is being realigned at this point to flow under St. George's Bridge while the northbound M1 - A1 link traffic will eventually travel over the bridge en route to Rothwell Haigh Junction. This junction is a complex junction where the motorway crosses two local roads, the A639 and B6481 (see photograph below). The A639 west of the Link Road which is shown on its current route at the top of the photograph, will shortly be diverted to a new roundabout north of the motorway (below centre of the photograph) to merge with the B6481.

Like many of the world's most famous bridges, steelwork for

the Aire Valley Viaduct is being fabricated by Kvaerner Cleveland Bridge in Darlington. The beams have been delivered to site by road and are now sitting alongside the river awaiting erection. They will be lifted into place using



one of the UK's largest mobile cranes with most lifts exceeding 150 tonnes.

North of the river, Pontefract Lane Junction has started to rise from the ground and Pontefract Lane has been closed for approximately twelve months while the new junction is completed. East of Colton Beck construction of the concrete road pavement has commenced using a concrete paver. The road is a continuously reinforced concrete pavement with reinforcement of steel bars laid in a mesh on a concrete sub-base ahead of the paver. This type of road construction has been selected for its durability. Stretches of motorway half a kilometre long either side of Selby Road will be topped with stone mastic asphalt to reduce noise.

Bridges carrying local roads across the motorway at Bullerthorpe Lane, Barwick Road and Parlington Junction are now open to traffic. The A656 realignment north of Garforth has also been opened

allowing a temporary closure of the old Ridge Road across Hook Moor.

Work carried out on the A1 widening has included the laying of approximately 100,000 tonnes of blacktop. The road is built up in three layers with a 40mm thick surface layer of stone mastic asphalt to reduce noise alongside Aberford. Opening of the Collier Lane realignment through the new motorway underbridge has allowed the removal of the old Collier Lane and completion of the earthworks in this area. Preparation of the formation level and completion of the road construction above Collier Lane and Lotherton Lane will complete the southbound carriageway from Nuthill to Mickfield. Details of the subsequent traffic management arrangements are given inside.



A1/A64
UPDATE

PROGRAMME FOR THE NEXT THREE MONTHS

The tunnel construction works on both the M1 and M62 at Lofthouse M1-M62 Interchange will move into phase two during the next three months. To complete phase one, the first sections of tunnel will be buried and a new motorway carriageway will be constructed above. The traffic will then be switched to this new carriageway (M62 eastbound and M1 northbound) leaving vacant carriageway in the centre of the motorway. Excavation will commence in this central area for phase two of the tunnel construction. Drivers are reminded to observe the 50mph mandatory speed limits through the works. Speed cameras are in operation. During November the M62 will be closed overnight one weekend between junctions 28 and 29 for the erection of the new bridge beams at Lingwell Gate Lane and Dolphin Lane overbridges. Advance warning signs and public notices will be displayed nearer the time. Beams will also be erected to the new bridges for the M62 eastbound off slip and M1 northbound on slip at Lofthouse Interchange. Widening of the M62 eastbound will continue between junctions 28 and 29. On the M1, traffic will be switched to the realigned route under the new St. George's Bridge at Belle Isle Interchange. The southbound switch will take place in November and precede the northbound switch by approximately one month. Nearer Christmas the M1 will also be switched to new alignments at Thorpe Lower

Lane bringing the new bridge into use. At Rothwell Haigh junction the new roundabouts north and south of the motorway will be completed allowing the junction to operate in its finished arrangement albeit that the motorway slips will not be in operation. Junctions at Austhorpe (A63) and Parlington (A642) will also be completed. Work in the centre section of the project will concentrate on the concrete carriageway and our target is to complete most of the section between Temple Newsam and Hook Moor before Christmas. This target is ambitious but weather dependent.

On the A1, the east half of the Field Lane footbridge and several gantries will be erected over the new southbound carriageway early in October. Significant traffic management arrangements will follow which are detailed below. When the northbound A1 traffic has been removed from the existing northbound carriageway the old A1 underbridges at Hook Moor, Lotherton Lane and Cock Beck will be demolished and the construction of new bridges will commence. Residents near these bridges will be notified of demolition works prior to commencement. Demolition of the Hook Moor Bridge will necessitate a full closure of the A642 at the bridge site for one weekend and a diversion route will be in operation. Demolition of Lotherton Lane bridge will follow and will take up to two weeks.



Above: Tunnel Construction Lofthouse Interchange



Above: St Georges Bridge



Above: Parlington Junction

In late November / December a noise barrier will be erected on the highway boundary alongside the north end of Aberford. The construction of landscape mounds running south from the barrier may commence before Christmas but will be weather dependent. Opposite Aberford the sewage works access road will be opened in mid October.

A1 AND A64 TRAFFIC MANAGEMENT

As part of the M1 - A1 Link Road project the A1 is being widened to four lanes in each direction between Hook Moor and Nuthill. Major traffic management will soon commence on the A1 between the north end of Aberford and the north end of Micklefield. In mid-October the A1 southbound carriageway will be switched onto its new alignment using two lanes of the new carriageway. Simultaneously, the A1 southbound on and off slips at the north ends of Aberford and Micklefield and the A1 southbound on slip at Hook Moor will be permanently closed. Southbound access onto the A1 will be either at the A63 or A64. Three to four weeks later the northbound carriageway will be switched to contraflow on

the new southbound carriageway. Traffic will run in two narrow lanes in each direction with a 50mph mandatory speed limit. There will be full closed circuit television coverage including an automatic incident detection system which is at the forefront of technology. Recovery vehicles will be on standby to deal with broken down vehicles quickly.

When the A1 northbound is switched, the northbound on and off slips at the north end of Aberford and Micklefield will be permanently closed. To replace the current access arrangements north of Aberford, an extension to Aberford Main Street will be opened linking the village to the A64 at the Bramham

Crossroads junction. This junction will be constructed in several phases due to space restrictions and the need to maintain existing routes. The new bridges will be opened to traffic in early November prior to the opening of Aberford Main Street extension. The full roundabout will be opened simultaneously with Aberford Main Street extension and various traffic management phases will follow while the new A1 northbound and southbound on and off slips are constructed. The new A1 northbound on and off slips at Bramham Crossroads are expected to open in December. Realignment works on the A64 either side of the A1 will swing into top gear

including construction of Hazelwood Bridge which will carry the Leeds bound A64 over the York bound A64 link and start in October. Throughout the works appropriate speed limits will be in force. Due to the regular changes to traffic management arrangements in the area drivers will need to remain alert and follow the guidance/instructions of road signs. For traffic management information on the A1, M1 and M62 telephone our recorded message on 0113 204 4226. For details of traffic management on local roads contact Peter Thickbroom on 0113 402 4072.



LORD MAYOR'S CHARITY APPEAL

The Kvaerner - Balfour Beatty Joint Venture was pleased to be able to participate in the Lord Mayor's Charity Golf Tournament in aid of Childline on 29 September. The Joint Venture entered a team of three who enjoyed a memorable round at Moortown Golf Club followed by a splendid dinner in the Banquet Hall at the Civic Hall. The Joint Venture congratulates the Lord Mayor and her team for the sum raised.

CHIEF EXECUTIVE VISITS SITE



Lawrie Haynes, (left) Chief Executive of the Highway Agency, visited the project at the end of September to review progress with Kevin Lazbury (right) Regional Director of the Highways Agency. Mr Haynes was escorted by the project team including Kvaerner/Balfour Beatty's Project Director Nigel Russell (centre).

WHO TO CONTACT

If you have cause for concern about the works our liaison team can be contacted on any of the following telephone numbers 0113 204 4014, 0113 204 4068 or 0831 196325. The latter number is a 24 hour line available for emergency use.

NATIONAL CONSTRUCTION WEEK

13-23 October 1997

Construction Industry Board



IMAGINE LIFE WITHOUT CONSTRUCTION

The first ever National Construction Week is to be launched in October to act as a focus for the whole industry and to improve its image through a variety of nationwide events. The country-wide initiative is being organised by the Construction Industry Board in association with the Year of Engineering Success and is sponsored by BT. In Leeds the Chartered Institute of Building in conjunction with other professional institutions from the construction industry is organising an exhibition of the construction industry at the White Rose Shopping Centre, between 18 and 23 October.

The Kvaerner - Balfour Beatty Joint Venture will be participating with displays focusing on the M1-A1 Link Road. Leeds Metropolitan University has also created a three dimensional computer model of the project which can be viewed at the exhibition.

To find out more about National Construction Week visit the dedicated web site which includes information about some of the local and national activities and careers guidance for craft and professional careers in construction. The web site address is: <http://www.ncw.org.uk>.

We look forward to seeing you at the White Rose Centre.

Kvaerner - Balfour Beatty JV and Babbie Group

M1/A1 Site Offices, Bullerthorpe Lane, Leeds LS15 9JJ Tel: 0113 204 4014 Fax: 0113 204 4001